

The RED Stamp **CPU-120** Case Packer integrates with our standard cigarette tax stamping machines. It automatically repacks the cigarette cartons into boxes, eliminating the need for manual hand packing.

The RED Stamp **CPU-120** dramatically improves the efficiency of the post-stamp operation for wholesalers that pick and pack to order.



FEATURES

- ✓ Heavy-duty Construction.
- ✓ Industrial Duty Drives Motor and Gearbox.
- ✓ Able to Work Left Hand or Right Hand Sides.
- ✓ Adjustable Push Arm for Different Carton Widths.
- ✓ Cigarette Carton Tip and Back-up Sensors to Prevent Jamming & to Reduce Carton Damage.
- ✓ Adjustable for all 6M Cases.
- ✓ Modem for Off-site Programming & Support.
- ✓ Computer Controlled, for Ultimate and Extreme Degree of Reliability and Upgradeability.
- ✓ PLC Indicates Exact Status of All Input and Output Signals.

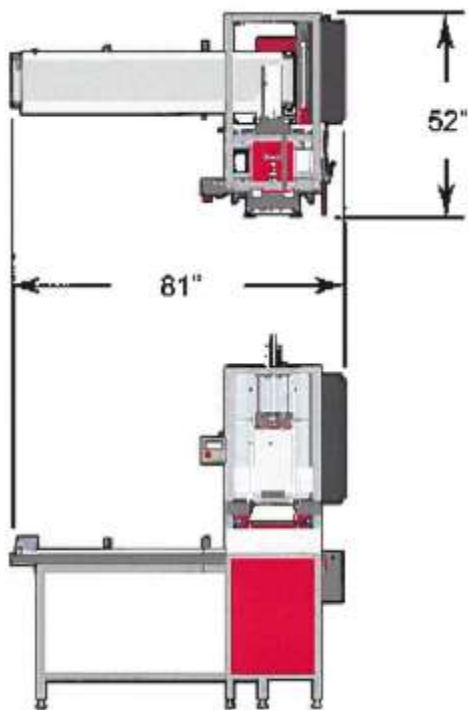


OPERATOR INTERFACE

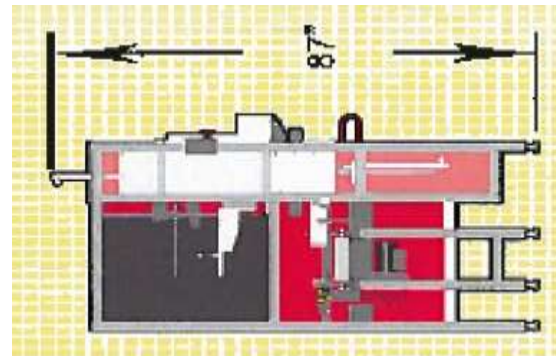
The **CPU-120** includes an easy to use color touch screen control panel.

DESIGNED FOR MODULARITY

The RED Stamp CPU-120 Cigarette Case Packer is designed for flexibility and modularity: Allowing for flexibility in system layout and processing to suit your facility layout space requirements and operations. **It offers automated operation, improved productivity, compact design, reduced operating cost, and heavy duty construction.**



Electrical	110 VAC; 1 Phase, 10 Amp, 60 Hz	
Air Supply	6 CFM @ 90 PSI, Clean & Dry, ½" NPT Fitting	
Foot Print	Without Out-feed	With Out-feed
Depth	30"	81"
Width	52"	52"
Weight	600 lbs	750 lbs
Performance	100-140 cartons per minute	



COMPLETE SYSTEM OPTIONS

Additional equipment available to work alongside this machine includes: In-feed Conveyor, Out-feed Conveyor, Case Splitters, Box Cutters, Cigarette Tax Stamps, Tote Strapping Units and Automatic Shrink Wrapping Systems.